

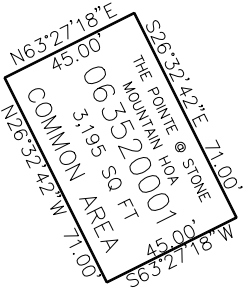
PART OF THE S.1/2, OF SECTION 10, T.5N., R.1W., S.L.B. & M.
THE POINTE AT STONE MOUNTAIN PRUD PH 2 1ST AMENDMENT

TAXING UNIT: 25

IN OGDEN CITY
SCALE 1" = 30'

SEE PAGE 298

SEE PAGE 298



SEE PAGE 298

SEE PAGE 298

10' UTILITY & DRAINAGE EASEMENTS EACH
SIDE OF PROPERTY LINES AS INDICATED
BY DASHED LINES EXCEPT AS OTHERWISE
SHOWN.

FOR COMPLETE SURVEY DATA SEE
ORIGINAL DEDICATION PLAT IN
BOOK 95, PAGE 63 OF RECORDS.